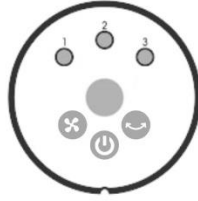


b. If you want to enlarge the fan coverage area in your room, press the OSC button, the fan will oscillate and blast your room in a larger scope. To stop oscillation just press the OSC button again.



To completely shut the fan off, turn all the controls to 'off', and remove the plug from the socket-outlet.

MAINTENANCE



Do not immerse the fan in water.
Do not use any cleaning chemicals such as detergents and abrasives.
Do not allow the interior (specially the PCB) to get wet as this could create a hazard.

1. Always remove the plug from the socket-outlet and allow the fan to stop moving before cleaning it.
2. Clean the external surfaces of the fan with a soft damp (but not dripping wet) cloth.
3. When the unit is not in use, make sure that it is unplugged from the wall socket. To store the fan, you may pack it in the original carton and store it in a cool dry place until later use.
4. In case of malfunction or doubt, do not try to repair the fan yourself, it may result in a fire hazard or electric shock.

 **atomberg**
"Why not?"

WALL Fan
EFFICIO +



INSTRUCTION MANUAL

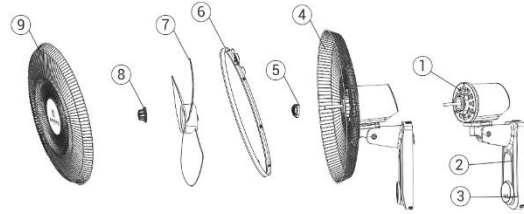
IMPORTANT NOTE:

Read this manual carefully
before installing or operating
your new Atomberg Efficio+ Wall Fan.
Ensure you save this
manual for future reference.

FOR HOUSEHOLD USE ONLY. SAVE THESE INSTRUCTIONS

SPECIFICATIONS

MODEL NAME	VOLTAGE	POWER
EFFICIO+	220-240V~, 50Hz	32W



1. Motor
2. Wall fan body
3. Control panel
4. Back grill
5. Fasten nut
6. Grill belt
7. Fan blade
8. Fan blade nut
9. Front grill

IMPORTANT SAFEGUARDS

WARNING When using an electrical appliance, basic safety precautions should always be observed, including the following: **READ ALL INSTRUCTIONS BEFORE USING**
WARNING: To reduce the risk of fire, electrical shock, or injury to a person:

01. This appliance cannot be used by children and people with reduced physical abilities, or individuals with lack of experience and knowledge.
02. Children should not play with the appliance.
03. Cleaning and user maintenance should not be done by children without supervision.
04. **WARNING!** After assembly, it's strictly forbidden to remove the protective fan guards during maintenance or cleaning. Never use the fan without the guards in place. It is forbidden to disassemble the fan guards when cleaning.
05. If the supply cord is damaged, it must be replaced by the manufacturer of a service agent in order to avoid a hazard.
06. Do not insert or allow foreign objects to enter the guard openings as this may cause damage to the appliance or injury to the user.
07. Do not put any clothes or curtains on the fan head as they could be sucked into the fan during operation and damage the appliance.
08. Before using this product, read these instructions and keep them for future reference.
09. If you give this appliance to another person, also person, give them these instructions as well.
10. Use this appliance as described in this manual. Misuse and any use contrary to these instructions shall not engage in any way the responsibility of the manufacturer.
11. There is a risk of electric shock, fire, and injury to persons if you do not follow these instructions.
12. Do not use accessories other than those recommended by the manufacturer. Accessories not recommended accessories could damage the equipment and cause injuries.
13. Install the appliance on a flat and stable surface that does not have constant vibrations.
14. Put it in a vertical position. Any other position is dangerous.
15. Keep a minimum distance around the apparatus for sufficient ventilation.
16. Do not install the appliance near sources of open flames, such as lit candles.
17. Do not install the appliance in places exposed to humidity, bad weather and wet places.
18. Do not expose the appliance to water in any form, dripping or splashing. Do not place the appliance on any objects filled with liquid such as vases.
19. Do not immerse the appliance in water and other liquids.
20. Do not disassemble the appliance yourself. Disassembly, repair and verification should only be done by a qualified person.

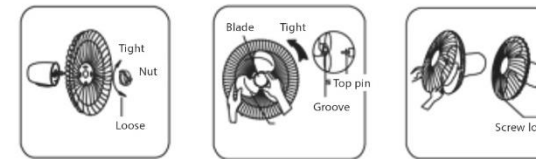
Assembly Installation

The fan is packed with its foundation and/or other parts unattached. You must attach them before operating the fan.

WARNING: Never operate the fan without its foundation and/or other parts attached. Operate the fan only in an upright position; any other position could create a hazardous situation.

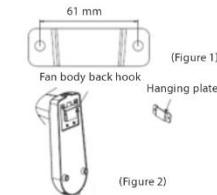
Assemble a sequence of the foundation and other parts as follow:

- a. Unpack the fan and remove all parts from the package.
- b. Use the fastening nut for the back grill to attach the back grill to the fan head and use the fan blade head for fan leaf to hold the fan leaf in place.
- c. To attach the front grill to the back grill, you should use the grill ring carefully to hold them together and fasten the grill ring right with the screw provided



How to fix the fan on the wall

- a. Draw its position on the wall, according to the location and size of the fixed hanging board. (Figure 1)
- b. Use a percussion drill with a diameter of 6mm to drill two holes (if the wall is cement).
- c. Drive the plastic expansion pipe into the two holes, remove and fix the hanging plate (fixed in the direction as shown in Figure. 1) with screws attached to the plate, and then conduct inspection check remove firmly before hanging the body back hook on the hanging board (as shown in Figure 2).



Note:

- 1) After installation, ensure that the height of the product is greater than 1.8m.
- 2) Drive the attached plastic expansion pipe into the wall. The fan can only be hung up after a thorough check. When fan power is on, and if the fan is on and the hanging board is found to be loose, immediately cut off the power and remove it for reinstallation.

Instruction for operating the wall fan

First, plug in the power. Then, you will hear a 'beep' sound and the indicator light will not be on.

- a. Press the button "On/Off speed" to start the fan: press this button when the fan is turned on. The wind speed is automatically set at the "1" position. "Turn on" - "1" - "2" - "3" - "shutdown" is the sequence loop, and the corresponding light is on. Hear a "beep" sound when selected at the shutdown state.